

UElandy Inc.

Xiangcheng District, Suzhou,

Jiangsu Province P.R, 215143 China

www.uelandy.com

Refer to website for regional contact information.

Product Name:	UE Endo-free Plasmid Miniprep Kit	Lot ID:	221013KA2
Catalog Number:	UE-MN-EP-50	Expiration Date:	10/12/2025

Quality Control

Spectrophotometric Analysis

- Acceptable Range for A260/A280=1.8±0.15.
- Comparison of the Test Sample to a previously tested Standard. Acceptable range for Test Sample is ≤ ±10% of Standard, based upon spectrophotometric analysis. The “Standard” is a previously tested and validated sample.

Restriction Analysis

- 1 μ g of plasmid is digested to completion by EcoRI

Electrophoretic Analysis

- Agarose gel electrophoresis of the samples exhibits a defined plasmid band with no degradation.
- Agarose gel electrophoresis of the samples exhibits no contaminating RNA.
- Agarose gel electrophoresis of the samples exhibits no contaminating bacterial genomic DNA.

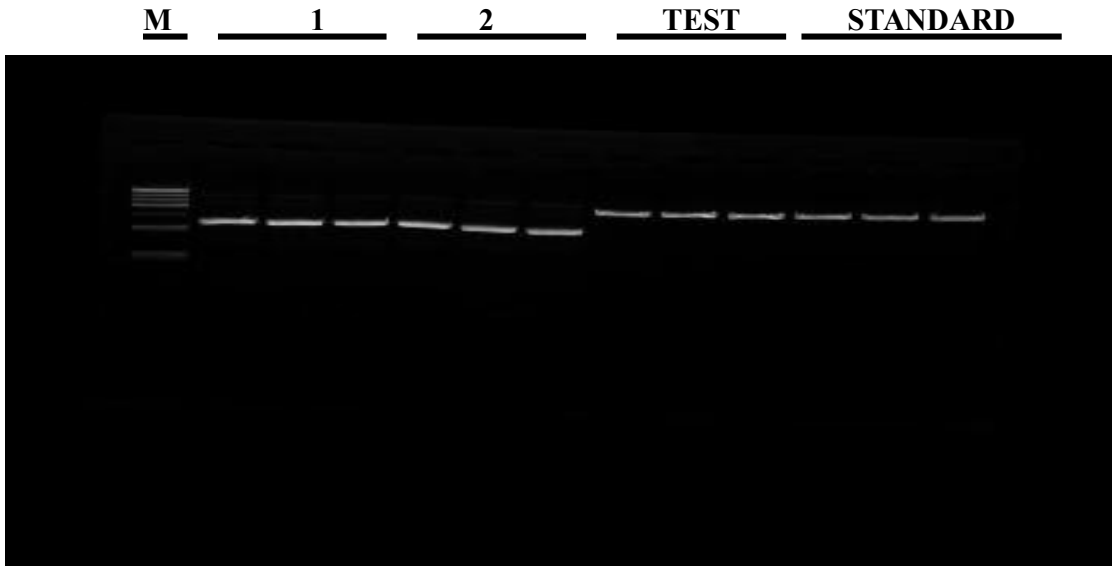
Endotoxin Level Analysis

- Endotoxin level of Test Sample is $\leq 0.1\text{EU}/\mu\text{g}$

Gel Image and Test Data

Item	Test Date						Sample
	1	2	3	4	5	6	
A260	0.2274	0.2306	0.2264	0.2418	0.2387	0.2778	1,2,3 are duplicate Test Samples 4,5,6 are duplicate Standards
A280	0.1232	0.1283	0.1279	0.1370	0.1363	0.1541	
A260/A280	1.84519	1.7984	1.7705	1.7653	1.7513	1.8027	
Yield (µg)	17.0526	17.2978	16.9833	18.1365	17.9006	20.8360	
Electrophoresis	✓	✓	✓	✓	✓	✓	PASS
No visible RNA	✓	✓	✓	✓	✓	✓	
Endonuclease digest	✓	✓	✓	✓	✓	✓	

[Test Sample/Standard] Yield Difference	-9.74%						PASS
Endotoxin Level(EU/μg)	0.0423	0.0395	0.0442	0.0481	0.0382	0.0338	PASS



※1 and 2 respectively represent the test and standard enzyme digestion

UElandy Inc. warrants and represents that all inspections and testing for the article described above have been performed at UElandy Inc. QC laboratory located on-site at the manufacturing plant. UElandy Inc. manufacturing facility is located at Room 302, Building 1, No.18& Chunyao Road, Xiangcheng District, Suzhou, Jiangsu Province P.R, 215143 China

(QC Inspector) *tian qin zheng*

(Approver) *Qin Hua-Yu*